

www.Kama-Labs.com

(Assembly instructions and latest firmware you can find on my website)

QUEEN NUMITRON

Assembled my own hands 😊

Thanks for purchase!!!

Features:

- * 4x **IV-13** Russian numitron tubes (made in 1984)
- * 1x **IV-9** numitron separator (show on/off of alarm)
 - * 32bit STM32F100C8 processor
 - * 13 parameters
 - * 12/24h time mode
 - * 1 Alarm
- * Fade at night (increase lifetime of tubes in twice!)
 - * Fade leading zero
 - * Noiseless work
- * Smooth PCB routing
- * Full remote control
- * USB connection to PC (for update firmware)
- * Double **Multicolour** led glow (independent random color leds and **RGB** leds under each tube)
 - * Adjustable brightness of **RGB** and AUTO leds
- * **RGB** led (6 colors of backlight or autochange color mode)
 - * 9 modes of switch digits
- * **IV-13** tubes works in static mode
 - * Thermometer
 - * Correction of temperature
- * Temperature format: Celsius or Fahrenheit
 - * Accurate to +/- 1 minute/year

- * Setup of clock accuracy
- * Date in format **DD.MM.YY** or **MM.DD.YY**
- * **Backup battery**. Data is not lost when power off
- * 3 buttons
- * Power source - DC **12V** barrel plug 5.5mm/2.1mm ("+" inside, "-" outside)
- * Consuming current - 1000mA
- Dimensions of the clock - 55mm(L) x 60mm(H) x 115mm(W).
- Dimensions of the clock in case - 85mm(L) x 70mm(H) x 145mm(W).

No	Parameter	Value
1	12/24 time format	0 - 12h time format 1 - 24h time format
2	Hi.Hour tube fading	0 - disable fading 1 - enable
3	Show time mode	0 - hard mode 1 - constructor 2 - smooth 3 - slot machine №1 4 - slot machine №2 5 - wave 6 - random fade 7 - shift 8 - all effects one by one
4	Backlight mode	0 - all leds off 1..5 - brightness 6 – AUTO brightness 7 – AUTO brightness + fade at night 8 - fade at night
5	Show current temperature	0 - disable 1 - every 2 minutes 2 - every 5 minutes
6	Night fading	0 - Off 1 - On
7	Show current date	0 - off 1 - every 2 minutes 2 - every 5 minutes

8	Correction of temperature coefficient	0 .. 9 Current temp. - temp.coeff. = real temperature																				
		<table><tr><th>Temp.coeff</th><th>Current temp.</th></tr><tr><td>0</td><td>0</td></tr><tr><td>1</td><td>-1</td></tr><tr><td>.</td><td>.</td></tr><tr><td>.</td><td>..</td></tr><tr><td>10</td><td>-10</td></tr><tr><td>11</td><td>+1</td></tr><tr><td>.</td><td>.</td></tr><tr><td>.</td><td>.</td></tr><tr><td>19</td><td>+10</td></tr></table>	Temp.coeff	Current temp.	0	0	1	-1	10	-10	11	+1	19	+10
Temp.coeff	Current temp.																					
0	0																					
1	-1																					
.	.																					
.	..																					
10	-10																					
11	+1																					
.	.																					
.	.																					
19	+10																					
9	Clock accuracy correction	0 .. 9 Bigger value - slowly clock																				
10	Date format	0 - DD.MM.YY 1 - MM.DD.YY																				
11	Temperature format	0 - Celsius 1 - Fahrenheit																				
12	Brightness of bottom LEDs	0 .. 6																				
13	Brightness of tubes	0 .. 3 4 – automatic brightness																				

How to use remote control?



Button	Action
OK	Enter/exit in parameters mode
◀ ▶	Next effect of switch time
▲ ▼	Change value
0	HH:MM or MM:SS time format
1	Time setup
2	Alarm setup
3	Date setup
4	Show temperature
5	Show date

6	On/off alarm
7	
8	Fade LEDs and tubes
9	Brightness of bottom LEDs
*	Change brightness of top LEDs
#	Change color of top LEDs
▲	Change brightness of tubes

- Use ◀ ▶ for change position in setup modes
- For change value you can use ▲ ▼ or use any number buttons

Button function:

Short click = ~0.5 sec.

Long click = ~1 sec

First button - Time: Short click - on/off alarm (indicates by IV-1 separators tubes) Long click - time setup

Second button - Alarm: Short click - parameters mode Long click - alarm setup

Third button - Color: Short click - change color of backlight or disable leds Long click - date setup

Button function in settings:

First button: +1 Second button: -1 Third button - Time: Next

If you will press and hold one button and then will press second:

1 + 2 = show current temperature

1 + 3 = show current date

2 + 3 = test mode for checking tubes

How to set time or alarm?

1) Press and hold 1 button ~1 sec for set time and 2 button for set alarm

2) Hours tubes start to blink

- 3) Press 1 button for increment value
- 4) Press 2 button for decrement value
- 5) Press 3 button to go for next value

How to change parameters?

- 1) Press 2 button for enter into parameters mode
- 2) You will see number of parameter (1) and value of parameter (0):
1_ : _ 0
- 3) Press 1 button for change value
- 4) Press 2 button for go to next parameter

How to set current date?

- 1) Press and hold 3 button for 1 sec
- 2) You will see date in DD.MM.YY format
- 3) Press 1 button for increment value of days in month
- 4) Press 3 button again for set the month and year

How to change color of backlight?

Press 3 button to change color or to set autochange color.

How to make HARD RESET if something wrong?

When your clock starts, you hear short melody. If you will press 1 button for 1-2 second in this moment, clock will reset all your setting.

You will hear p-i-i-i-i-i-p p-i-p p-i-p. That's mean HARD RESET is done.

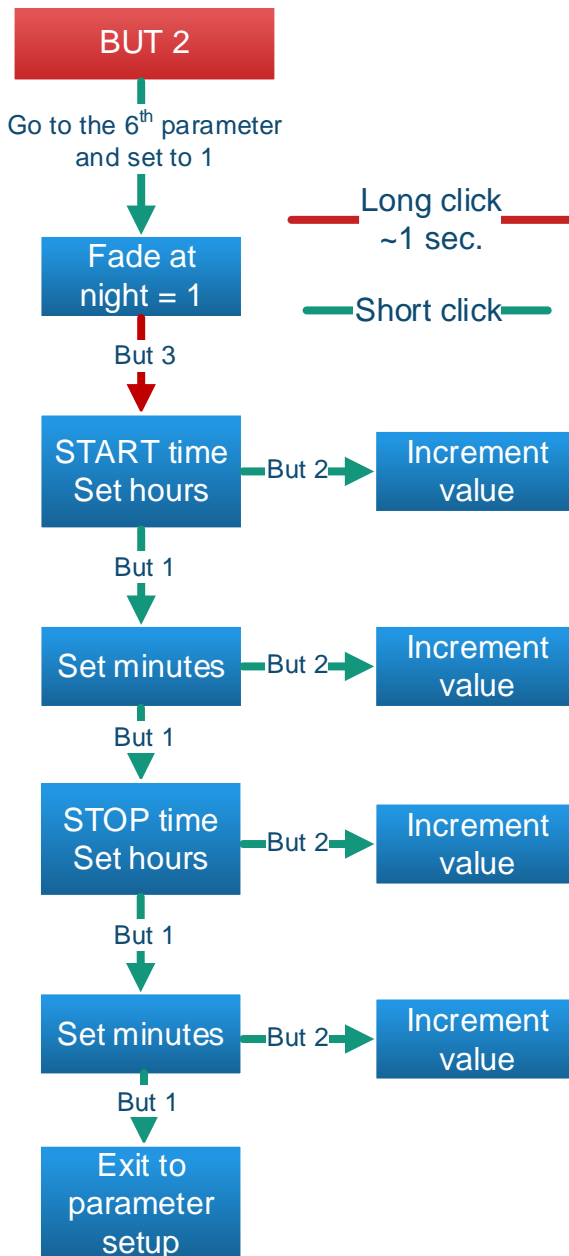
How to set night fading?

Set 6th parameter to 1 and press **3 button** for ~1sec and you will enter into setup. You will hear b-i-i-i-p and will see:

00 : __ : __

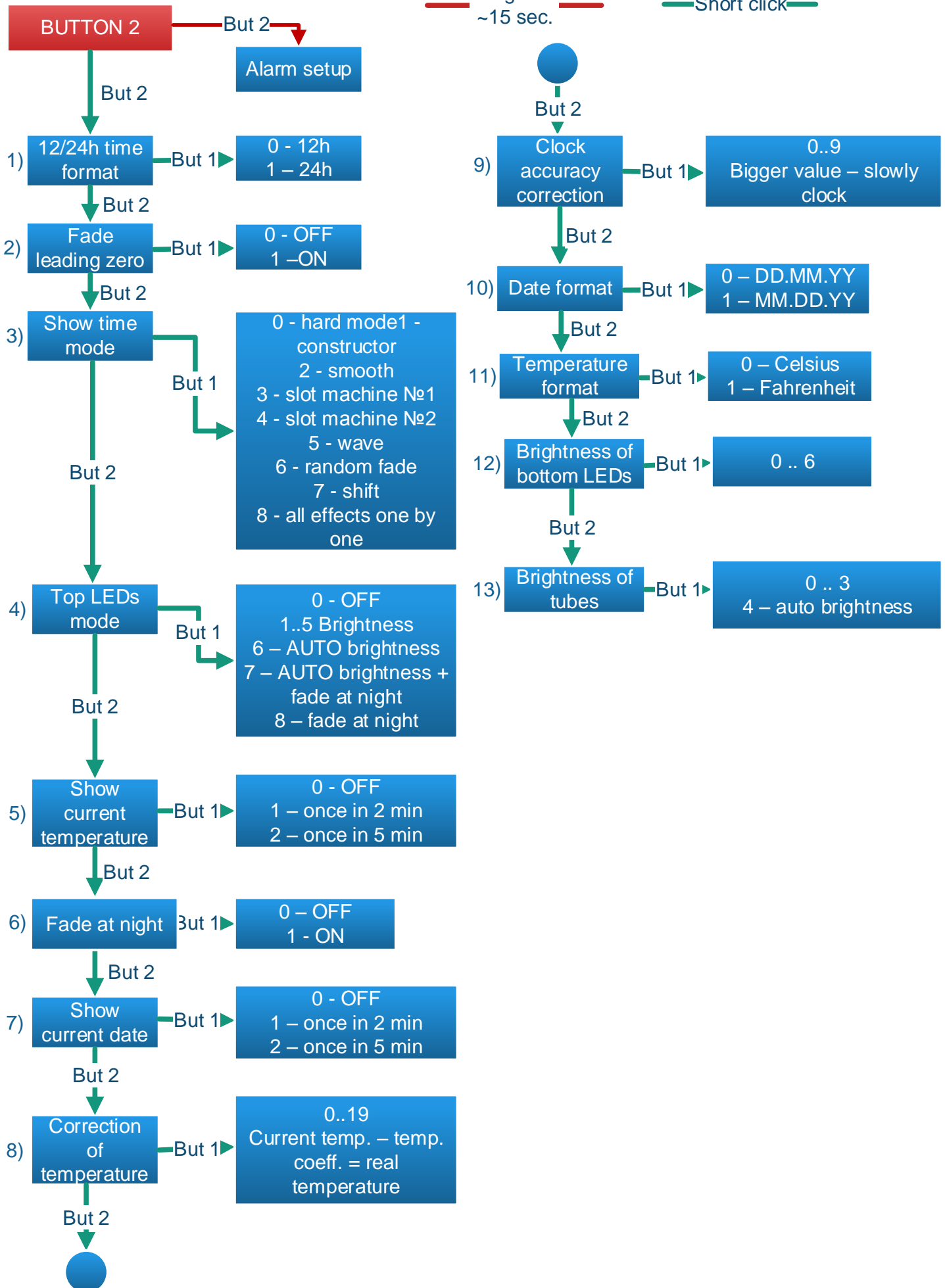
Now, you need set time of START fading. Use **2 button** for increase value and **1 button** for change digit. After that, you need to set time of STOP fading similarly.

Example: you go to sleep at 11:10PM and get up 6:30AM. So, you need to set START time as 23:10 and STOP time as 6:30.



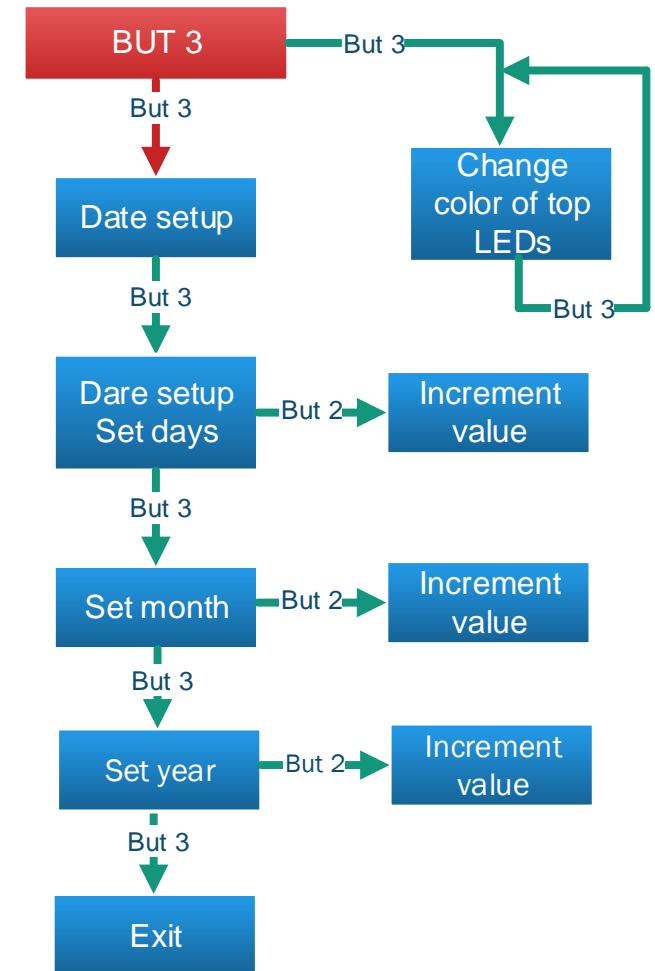
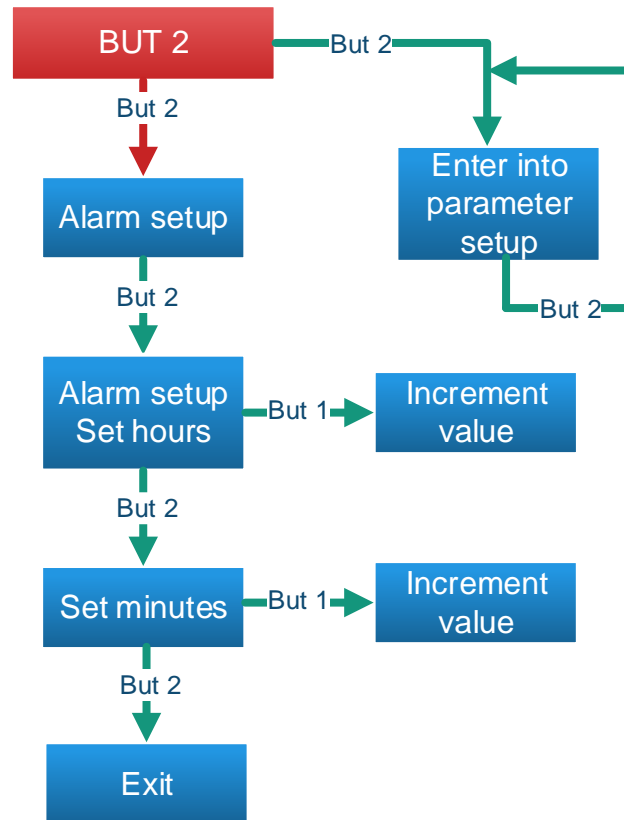
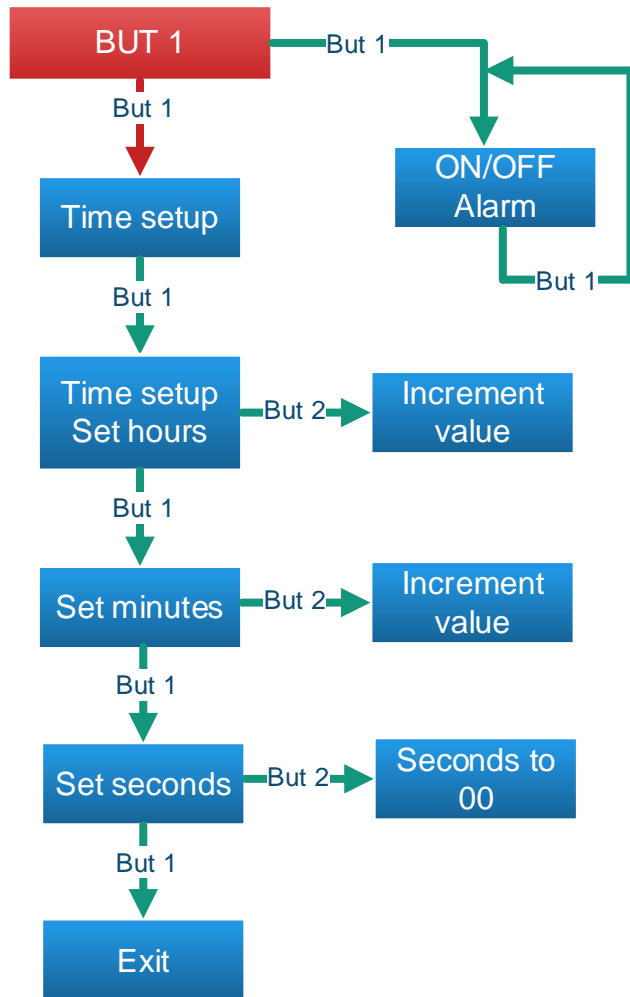
Long click
~15 sec.

Short click



Long click
~1 sec.

Short click



Power plug for 12V
DC power supply

Light sensor

Diagnostic socket/
socket for USB-UART
converter

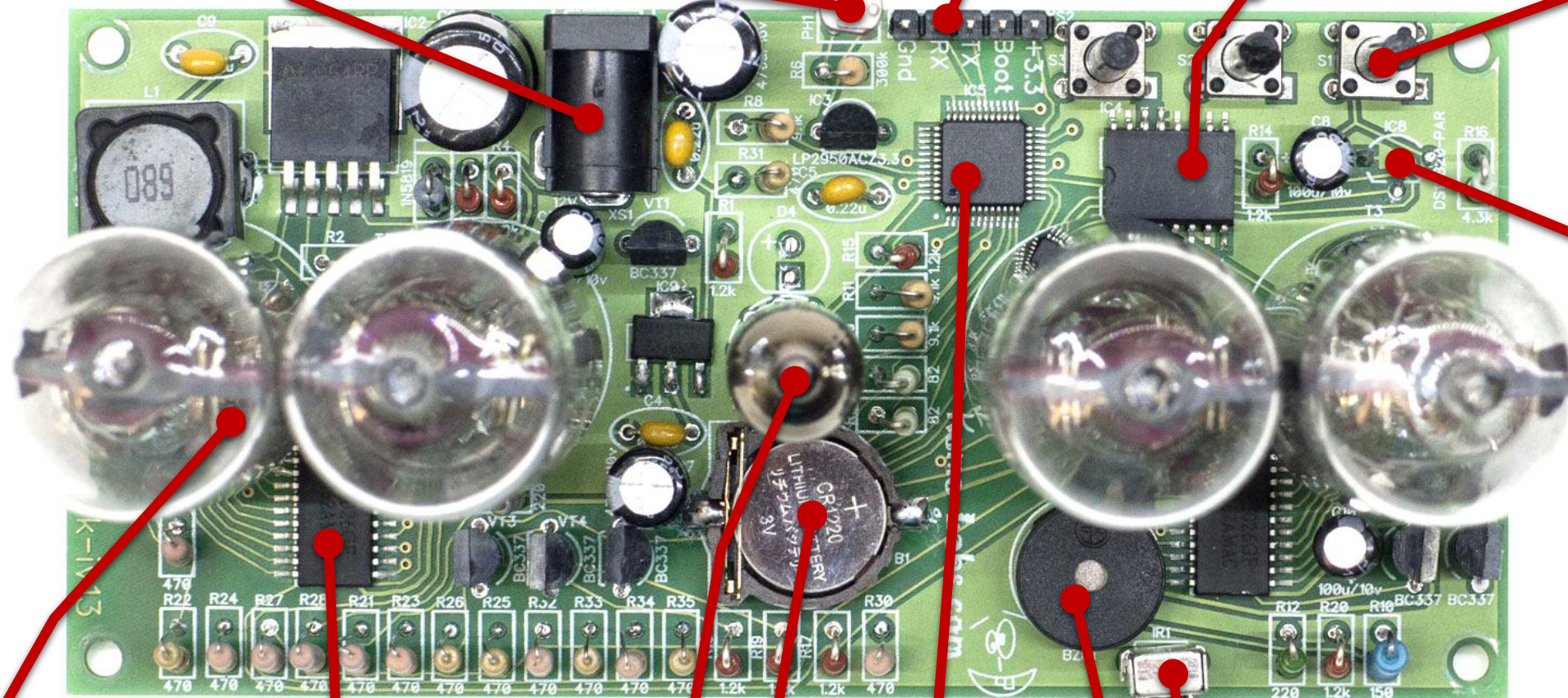
Buttons:

1

2

3

High-precision time
chip



AM/PM
indicator

VFD driver

IV-9 separator
on/off alarm

Battery

MCU

Buzzer

Temperature sensor

Infrared Receiver