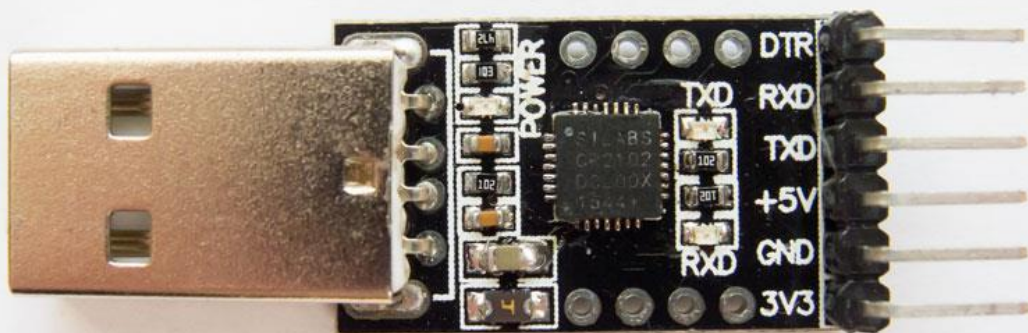


[www.Kama-Labs.com](http://www.Kama-Labs.com)

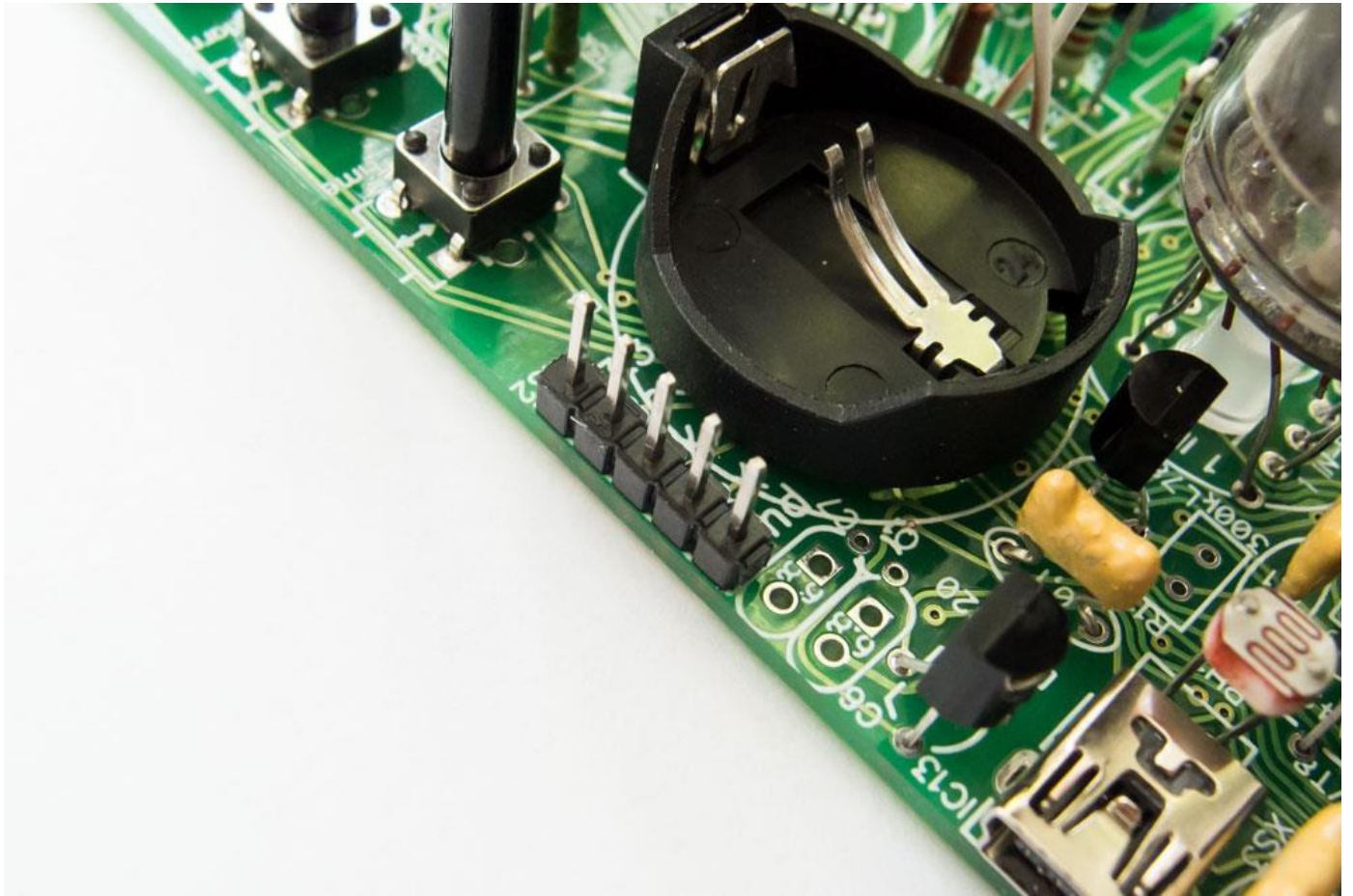
# FIRMWARE UPDATE

It is easier than you think!

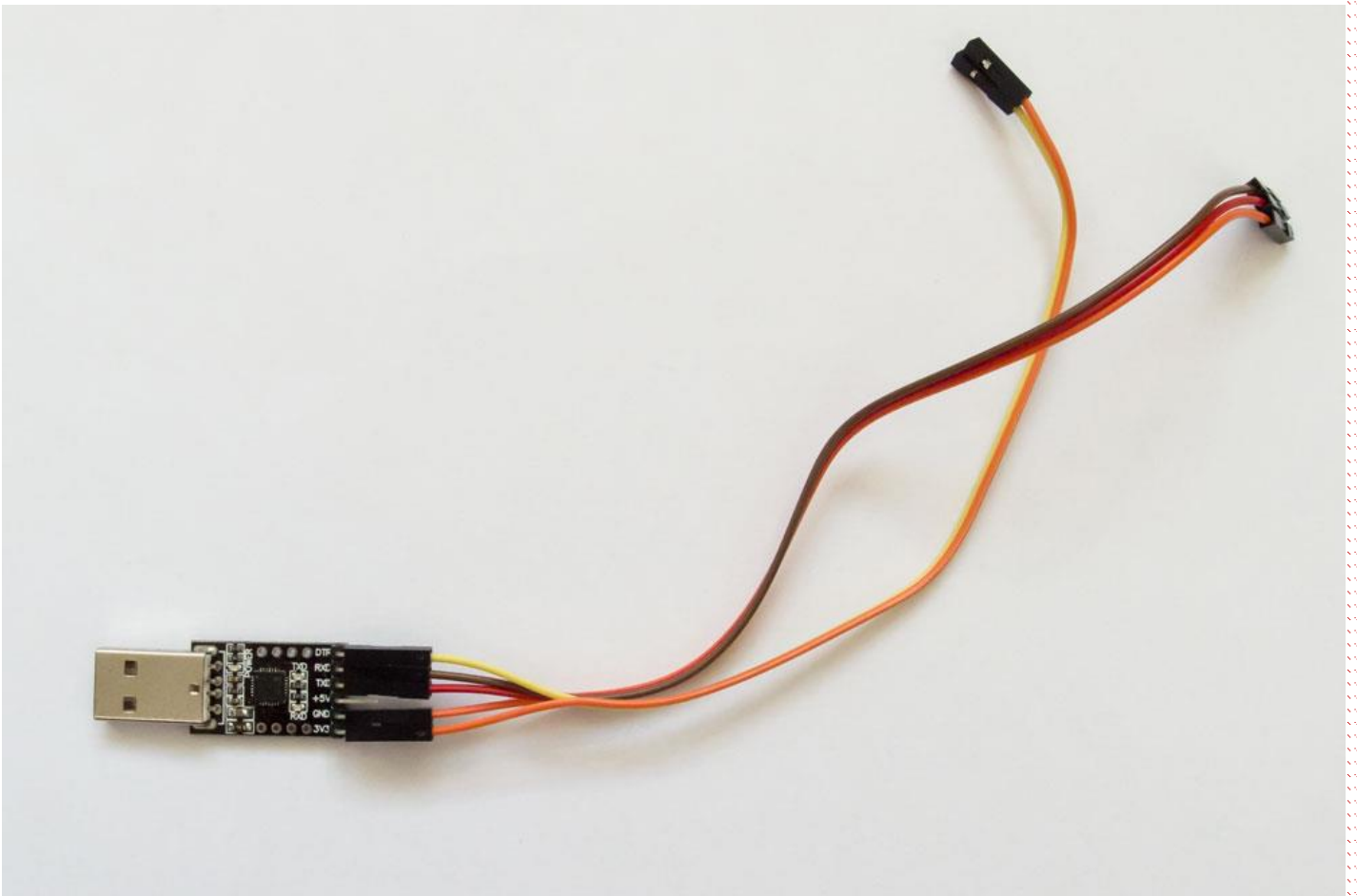
1) You need some USB-UART converter, like this for ex.:



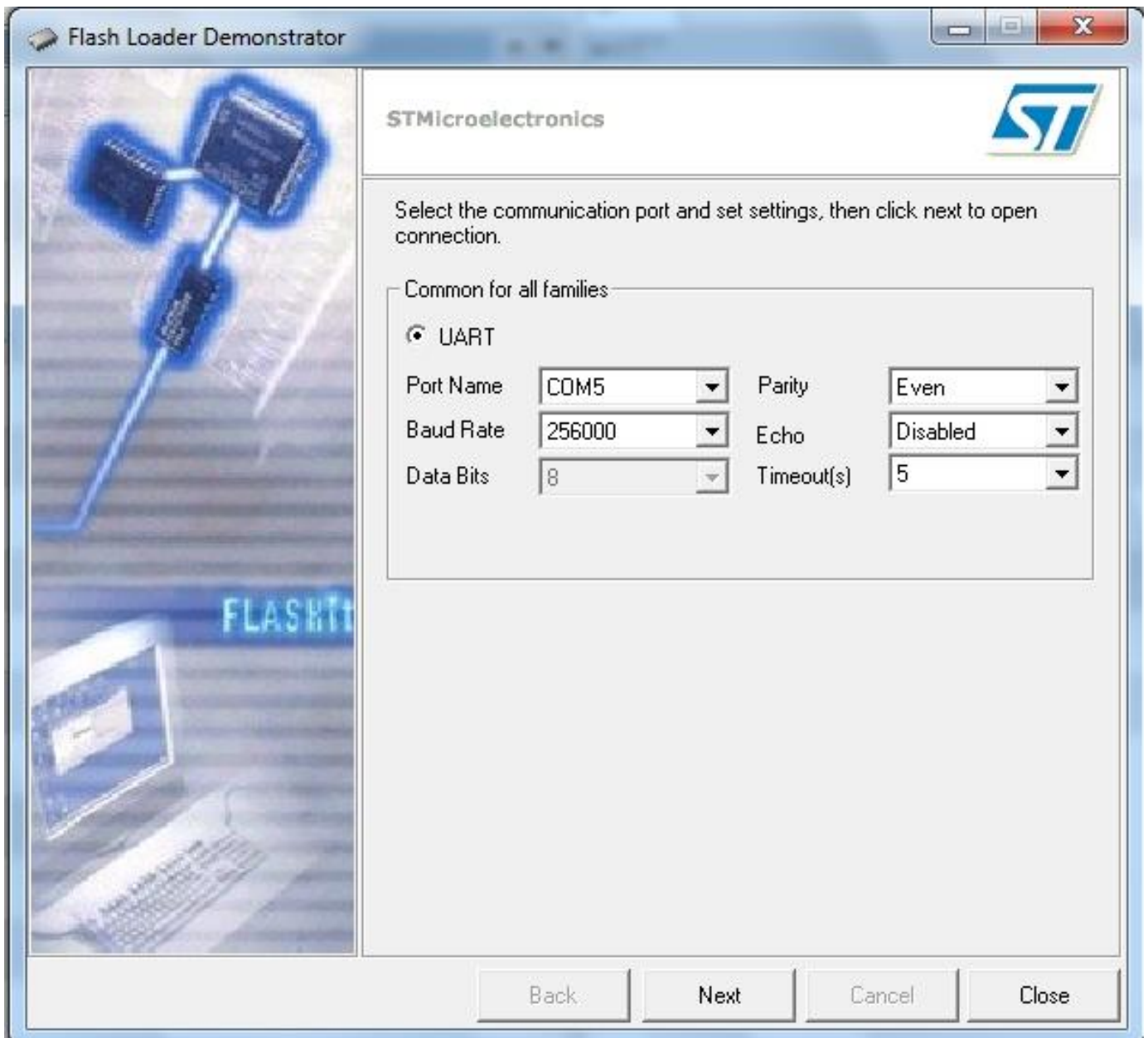
2) Next, find on your clock **XS2** socket:



3) Connect some wires to your USB-UART converter:



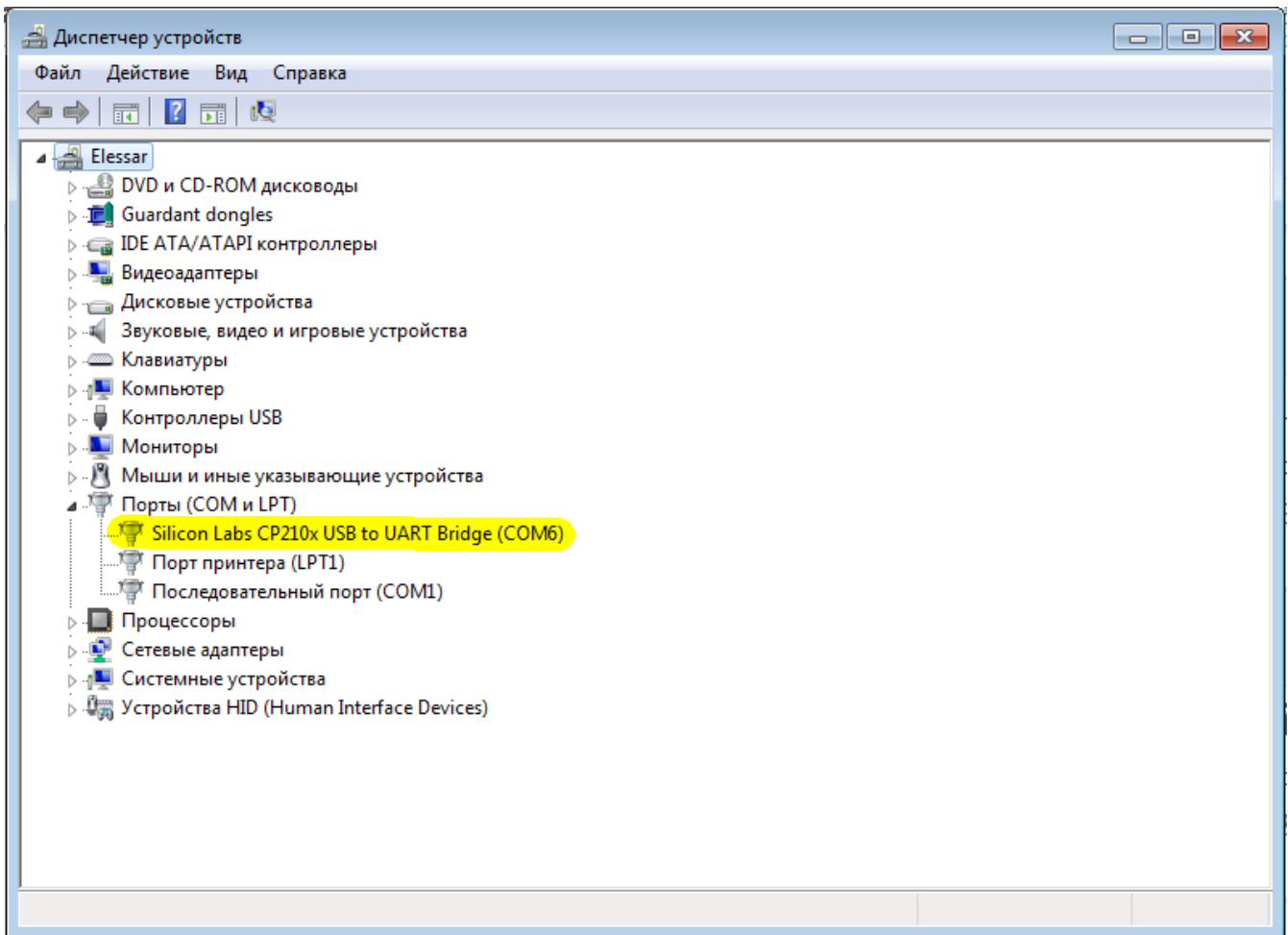
#### 4) Install programmer Flash Loader Demonstrator\_v2.2.0\_Setup.exe



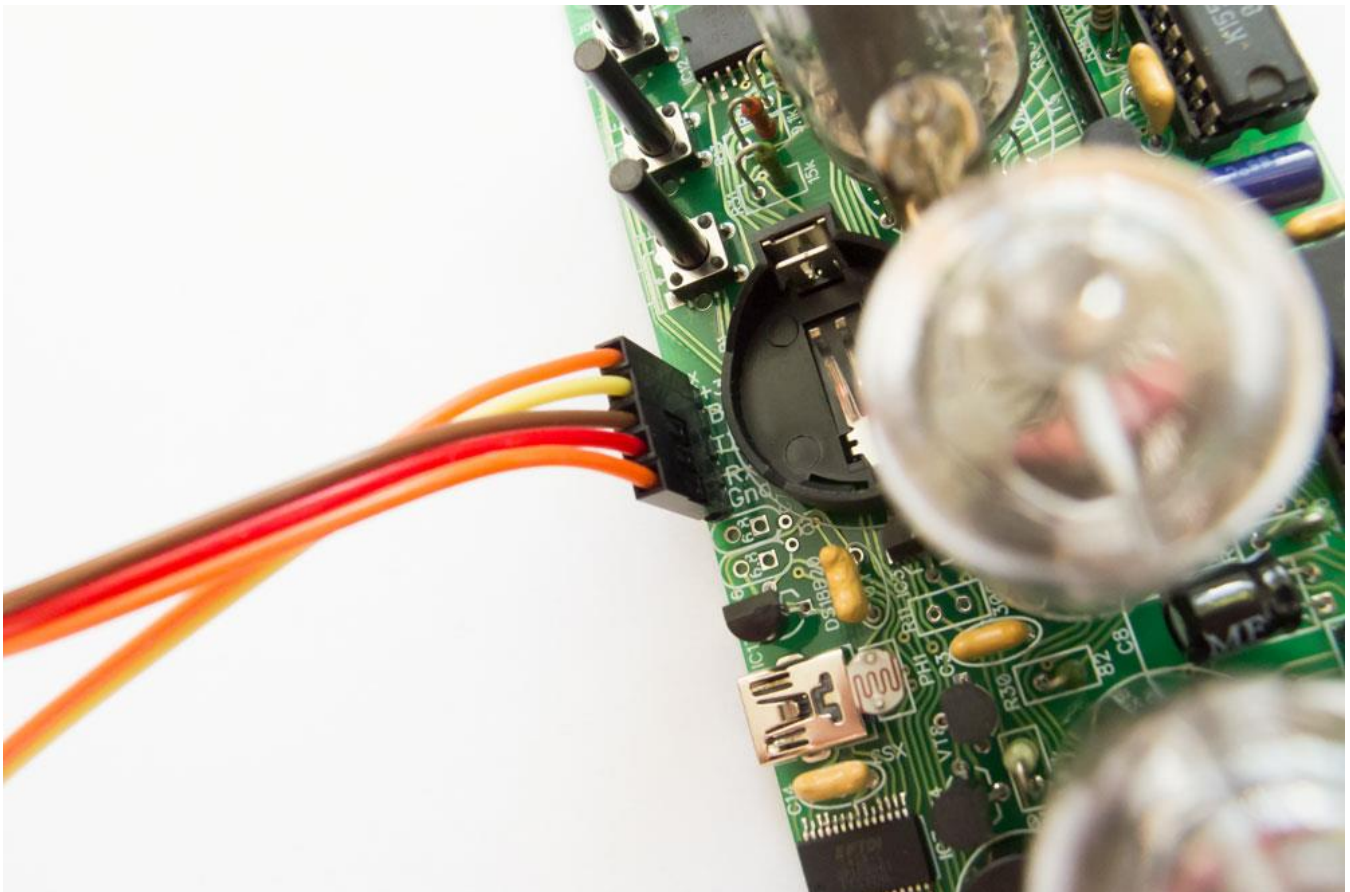
5) Connect USB-UART converter to PC

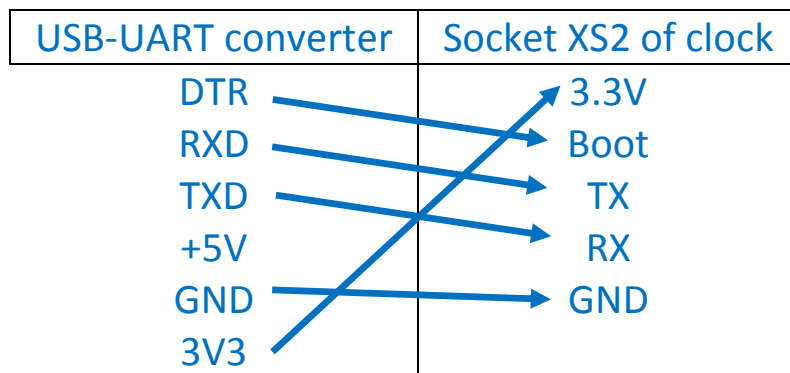
6) Windows will find a new device and new drivers will install automatically. If it not happens, install drivers manually form "CP210x\_Windows\_Drivers" folder.

7) A new COM-port will appear in DeviceManager:

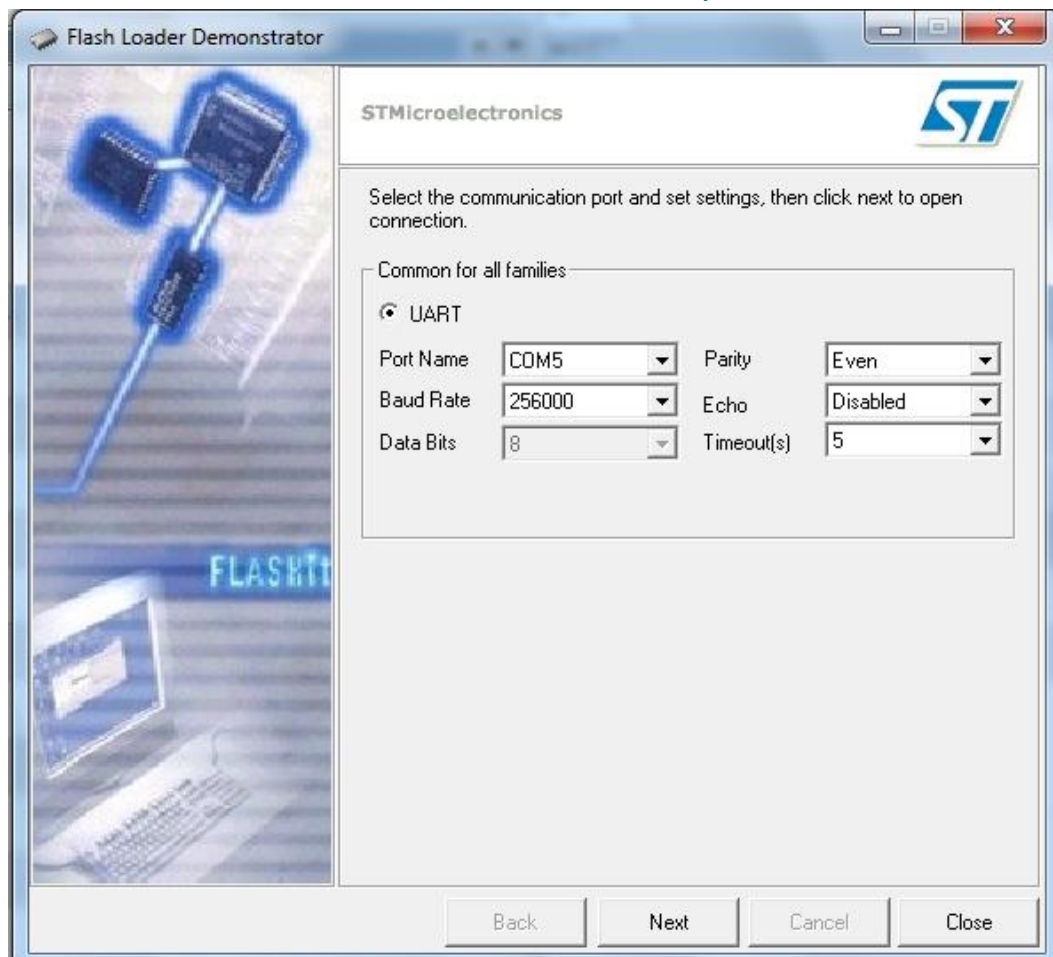


8) Connect USB-UART converter to XS2 socket. **DO NOT PLUG 12V OR 5V POWER ADAPTER:**

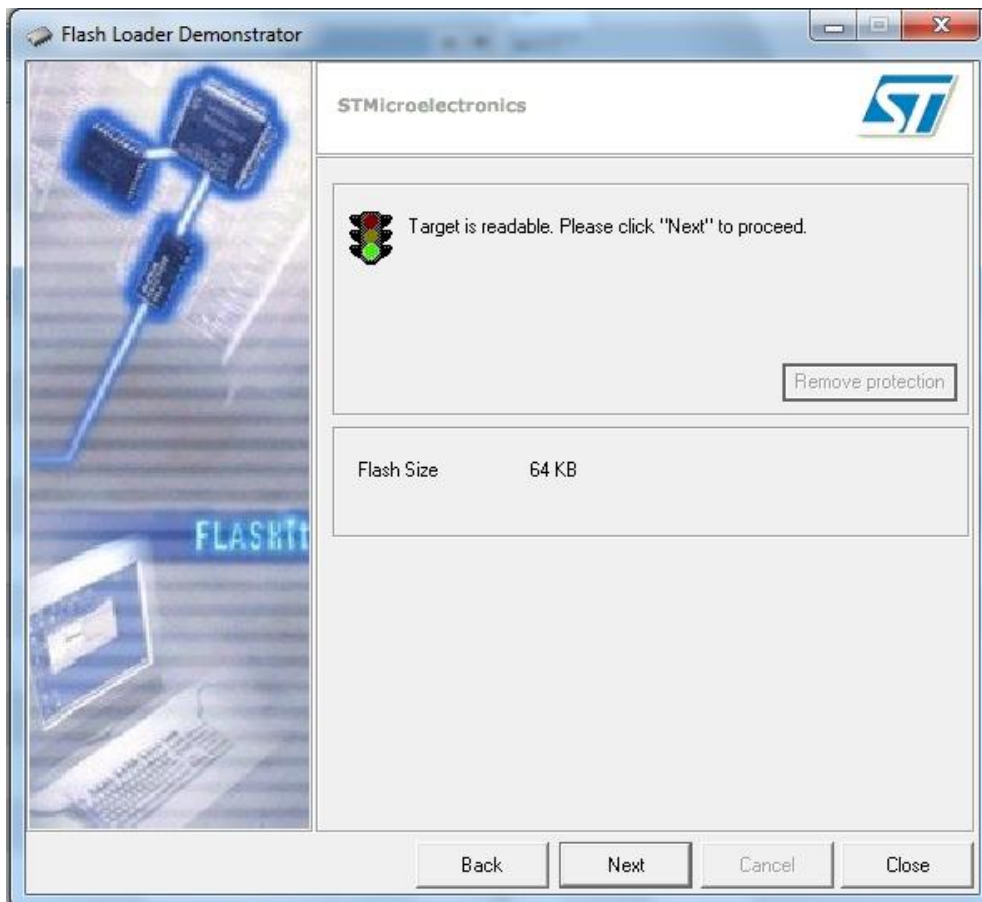




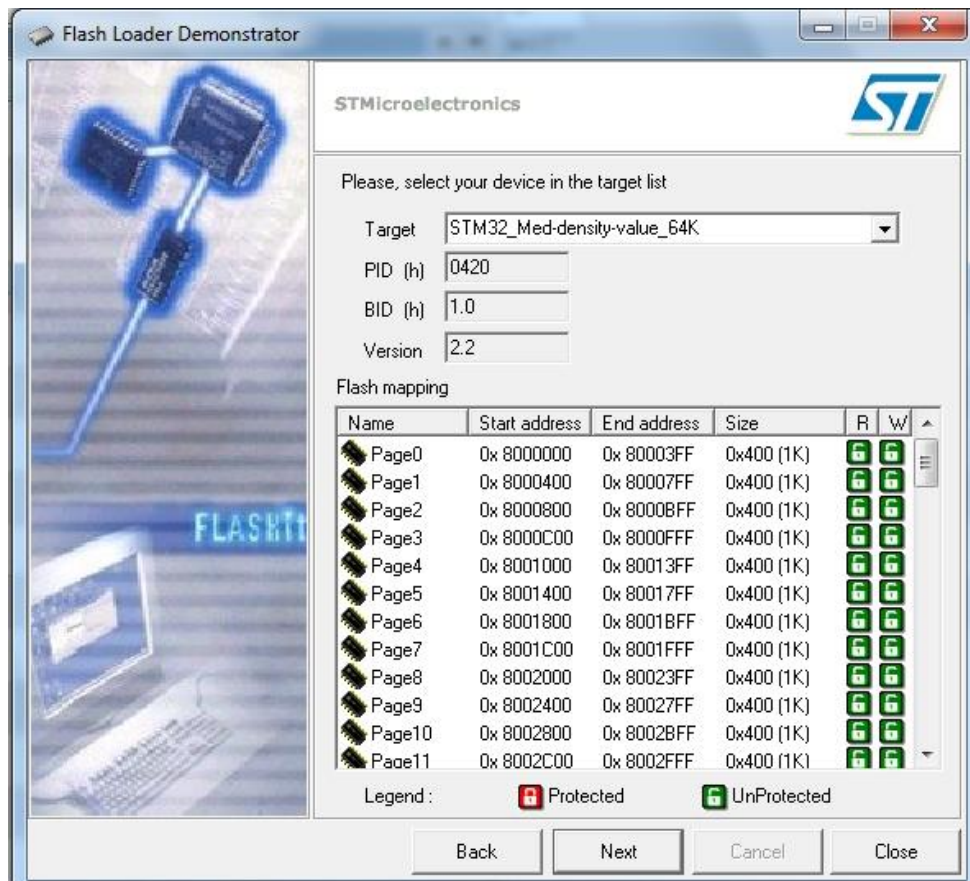
9) Then, start Flash Loader Demonstrator and set parameters like below:



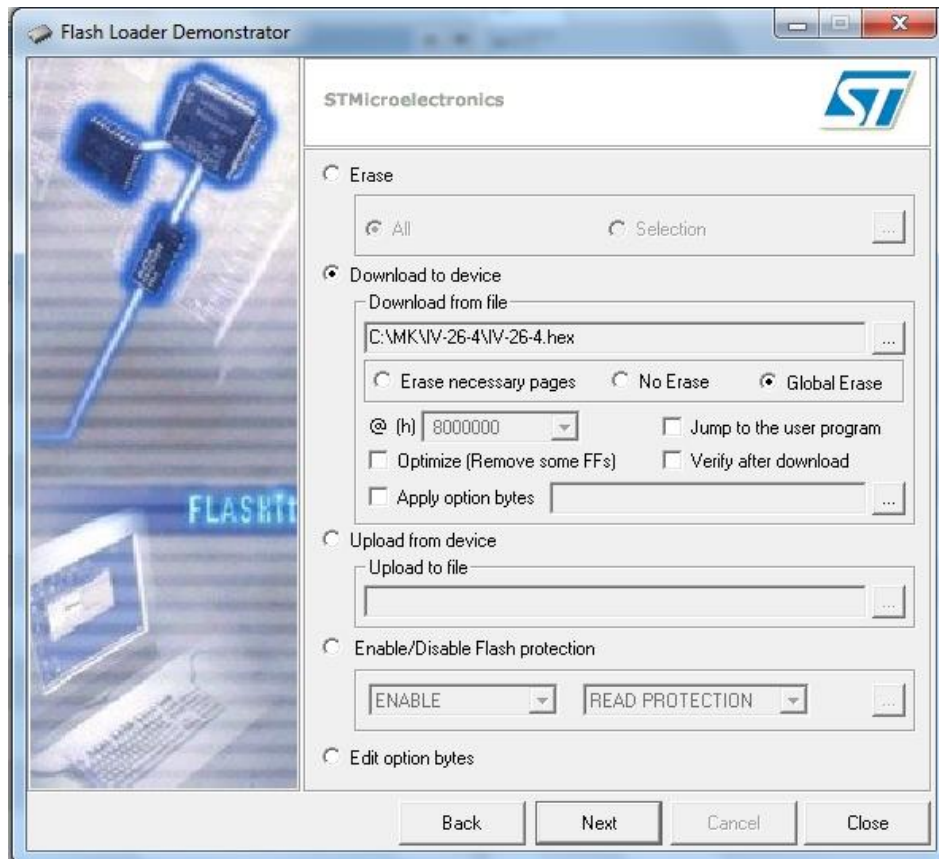
10) Then, click "Next". If all OK, Clock will answer and you will see:



11) Click Next



12) Set settings like below and click Next again:



13) Now choose a firmware file “\*\*\*\*\*.hex” and click Next. You will see process of programming:



14) At last you will see next pic if all OK.



**That's all!**

**CONGRATULATIONS!**